







# Calvert City TSDF Audit Packet

## Table of Contents

<b>1</b>	<b>General Facility Info Common Questions</b>	
<b>2</b>	<b>AES Plot Plans and Map</b>	
<b>3</b>	<b>Acceptable Packaging/EPA Codes</b>	
<b>4</b>	<b>Facility Compliance/Safety</b>	
<b>5</b>	<b>Permit Authorization Letters</b>	
<b>6</b>	<b>Insurance</b>	

## General Facility Information

**Facility Address:** AES Environmental, LLC (Operator)  
1689 Shar-Cal Road  
Calvert City, Kentucky 42029  
Ph: (270) 395-0504  
Fx: (270) 395-0516

**Corporate Address:** American Environmental Services, Inc.  
2100 Georgetowne Dr.  
Suite 303  
Sewickley, PA 15143  
Ph: (724) 933-4100  
Fx: (724) 933-4110

**EPA ID # :** KYD985073196

**Permit Status:** Part B permitted.

**Principal Owner:** Dave Torrence – President

**Property Owner:** American Environmental Services, Inc.  
2100 Georgetowne Dr., Suite 303  
Sewickley, PA 15143  
(724) 933-4100  
(724) 933-4110 fax  
Contact: David Torrence

**Wastes Accepted:** The facility is capable of receiving a large variety of hazardous and non hazardous wastes in drum, totes and bulk. A detailed list of acceptable EPA waste codes is listed in our Part A permit. AES Kentucky is also permitted for stabilization, neutralization and solidification of hazardous wastes. AES conducts treatment in tanks and containers and consolidates compatible wastes.

**Storage and Processing Capacity:** 4920 - 55 gallon drum equivalents  
90,000 gallons of RCRA Tank Storage  
36,000 gallons of Non-RCRA Tank Storage  
120,000 gallons of Stabilization/Neutralization

**Site Contact:** Kurt Schmidt  
Facility Manager  
(270) 395-0504

**Business Hours:** Normal business hours are Monday through Friday from 7:00 am to 4:00 pm. Receiving hours are Monday through Friday from 7:00 am to 2:00 pm. AES will accommodate off- hour deliveries to service our customers.

## **Site History:**

The Shar-Cal facility was constructed on property that was used solely for agricultural purposes prior to 1988. The treatment and storage facility was established by LWD Sanitary Landfill, Inc. and its affiliates in June 1988 to treat and store various industrial wastes. The facility was operated by LWD Sanitary Landfill, Inc. and owned by LWD Land Company and LWD Equipment, Inc. LWD Sanitary Landfill filed a Part A application for an interim status permit to treat and store hazardous waste with both EPA Region IV and the Kentucky Division of Waste Management in September 1990. EPA Region IV granted LWD Sanitary Landfill interim status to manage TC wastes effective September 25, 1990. The Kentucky Division of Waste Management granted LWD Sanitary Landfill interim status effective September 25, 1991. Permitted activities under interim status include RCRA treatment and storage in tanks, and RCRA treatment and storage in containers.

In September 1992 LWD Land Company sold the Shar-Cal facility and property to LWD, Inc. At the same time, LWD Sanitary Landfill transferred the facility operations to LWD, Inc. The Division of Waste Management recognized this transfer effective January 28, 1992.

Finally, AES purchased the Shar-Cal facility, land, and interim status permit from LWD, Inc. in June 2002. The Kentucky Department of Environmental Protection, Division of Waste Management issued the Part B permit on May 12, 2005

There are no known major spills or releases at this site and there are no closure or remediation activities associated with this site.

## **Company History:**

AES was incorporated in 1988 and has been in the environmental industry ever since. Initially, AES was formed to bid and operate hazardous waste management contracts at the various military bases throughout the world. In 1996, AES expanded its operations to include the servicing of environmental needs of private industry.

AES offers full environmental solutions to government and private industry including; transportation and disposal of hazardous and non hazardous wastes, field service and remediation, lab packing, custom environmental management programs and professional services.

AES is headquartered in Sewickley, Pennsylvania with offices located in Calvert City KY and Morgantown WV. In addition there are "field offices" in Pensacola, Florida; Charlotte NC; Norfolk, Virginia; Cleveland, Ohio and Dayton, Ohio.

## **Directions to the Kentucky Facility:**

From I-24 West,

- Take Exit #27 and turn right on to Route 62.
- Turn right onto Highway 95.
- Turn left onto Highway 1523.
- At North Star Steel sign, turn right on to Shar-Cal Road.
- Go past North Star Steel and turn left after you pass the white offices and head towards the landfill.
- Make your first right and look for signs for AES office.

From I-24 East,

- Take Exit #25 towards Calvert City and Highway 62.
- At the traffic light, turn left on to Highway 62.
- Turn right onto Highway 95.
- Turn left onto Highway 1523.
- At North Star Steel sign, turn right on to Shar-Cal Road.
- Go past North Star Steel and turn left after you pass the white offices and head towards the landfill.
- Make your first right and look for signs for AES office.

# Commonly Asked Audit Questions

## Site History

1. **Are there any known major spills or releases at the site?**

No

2. **Are there any closure or remediation activities associated with the site?**

No

3. **Does the site have any known contamination?**

No

## Environmental Factors

### **A. Geography**

1. **What is the land use surrounding the facility?**

The facility is located in an area characterized by a mixture of industrial and vacant parcels. The Building 2 “portion” of the Property is bounded on the north by Shar-Cal Road and vacant land. The Tennessee River is located approximately ¼ mile to the north-northeast of Building 2. The Building 3 “portion” of the Property is bounded is on the north by vacant land currently owned by LWD. The LWD Corporate office is located approximately 500 feet north of Building 3 (along Shar-Cal Road).

The Building 2 portion of the Property is bounded on the east by the landfill access road, across from which is vacant land currently owned by LWD (the same land that is north of Building 3). The Building 3 portion of the property is bounded on the east by a parcel also owned by LWD, and on which is located three vertical aboveground storage tanks containing diesel fuel. The tanks are approximately 250 feet from the eastern Property line.

Building 2 and Building 3 are bounded on the west by vacant land owned by LWD and to the south by the LWD landfill.

2. **What is the estimated population within a one mile radius of the facility?**

Ten (10)

3. **What is the estimated distance and direction to the nearest residential area?**

Two (2) miles northeast of facility.

4. **Are there any schools, hospitals, or critical wildlife habitats within three miles of the facility?**

No

## **B. Geology**

1. **What is the general geology at your site?**

The Calvert City Area lies within the Mississippi Embayment (Fenneman, 1938) physiographic region of western Kentucky. The Mississippi Embayment is a concave-upward trough-shaped geologic structure consisting of, in part, Cretaceous and younger sediments. These sediments consist of partially consolidated and unconsolidated sand, clay, gravel and silt. The sediments form a wedge that thickens from the edges of the embayment toward the Mississippi river. Ground water in this area flows from the upland areas south of Calvert City and north toward the Tennessee River, whereas flow in other parts of the Mississippi Embayment is to the southwest to the Mississippi river. Ground water in the area discharges to the Tennessee River, to supply wells, and to the upper and lower reaches of Cypress Creek. (Text from U.S. Geological Survey - Water-Resources Investigations Report 94-4239).

2. **Is the facility located within the 100-year floodplain?**

No, the facility has been constructed above the floodplain.

3. **Are there any water use wells within one mile of the facility?**

Yes, the Tennessee River is approximately  $\frac{1}{4}$  mile away.

4. **What is the source of water for the facility?**

Water for the facility is supplied by Calvert City Water Authority.

5. **Are there monitoring wells on site?**

No

## **C. Surface Water**

1. **How is storm water managed at the site?**

All rainwater that is collected inside the containment areas is collected and sent off-site for proper disposal.

All rainwater that falls outside the containment areas drains directly to the onsite storm water drains and natural runoffs.

## **Facility Information**

1. **What is the status of your Part B Permit?**

The AES Environmental, LLC Calvert City facility is a fully permitted Part B RCRA facility.

2. **What is the total property owned by American Environmental Services, Inc.?**

Approximately 23 acres.

3. **How many drums are you permitted to store in your facility?**

4,920 – 55 gallon drums or equivalents of hazardous waste.

4. **Do you have adequate spill containment for your storage areas?**

Yes, AES has extensive diking in all storage areas to properly contain any potential spills. AES greatly exceeds the requirement of 10% of the total storage volume. In addition, AES has containment around our loading dock and sampling area.

In addition, both buildings and the entire tank farm have an 80 mil-HDPE landfill liner as part of their containment. All storage and processing areas were built upon this liner to protect from any possible future liability from spills.

5. **Are the dikes properly sealed?**

All areas in the plant, both inside and outside of the diked areas, have a special Benjamin Moore Two-Part Epoxy Resin Coating System. This sealer was applied to seal and protect the concrete from any potential releases.

6. **Is the facility equipped for handling flammable wastes and volatile atmospheres?**

Yes. AES has gone to great lengths to make this facility capable of handling flammable wastes in the safest manner possible. AES has installed explosion proof lighting and switches in all areas. All conduit is thick wall, threaded and sealed.

The Building 3 processing area is equipped with digital PID and LEL sensors controlled through a central control panel with audio and visual alarms.

The forklift that is used has been equipped with a spark arrester and is UL certified for hazardous environments.

7. **Is the facility fenced and secured?**

Yes. The facility is protected by a six foot woven wire fence with 3 strands of barbed wire at the top. In addition there is interior closed circuit monitors.

8. **Are there underground storage tanks on your site?**

No

9. **Are there above ground storage tanks at your facility?**

Yes. AES has 9 above ground storage tanks. Six tanks are for RCRA Storage and are 15,000 gallon vertical carbon steel tanks. The other three tanks are non-RCRA, 12,000 gallon horizontal tanks and can be used for bulking of non hazardous liquids, such as oils and contaminated wastewaters.

10. **Is there adequate spill containment for the tank farm?**

Yes. The tank farm exceeds the required capacity by over 10,000 gallons.

11. **Does the facility have a completed Contingency Plan?**

Yes. The facility has a detailed Contingency Plan that details AES' actions and responses in case of an emergency.

**E. Facility Receiving Information**

1. **Is a profile sheet required before shipment into your facility?**

Yes. AES requires a completed AES Waste Profile Sheet to be completed prior to the scheduling of a shipment. Once a profile is received by AES, it goes before our Waste Approval Committee for review. The profile submitted will either be approved or denied based upon the committees review. No waste will be scheduled into our facility unless all profiles are approved by our Waste Approval Committee.

2. **Are samples required with each profile?**

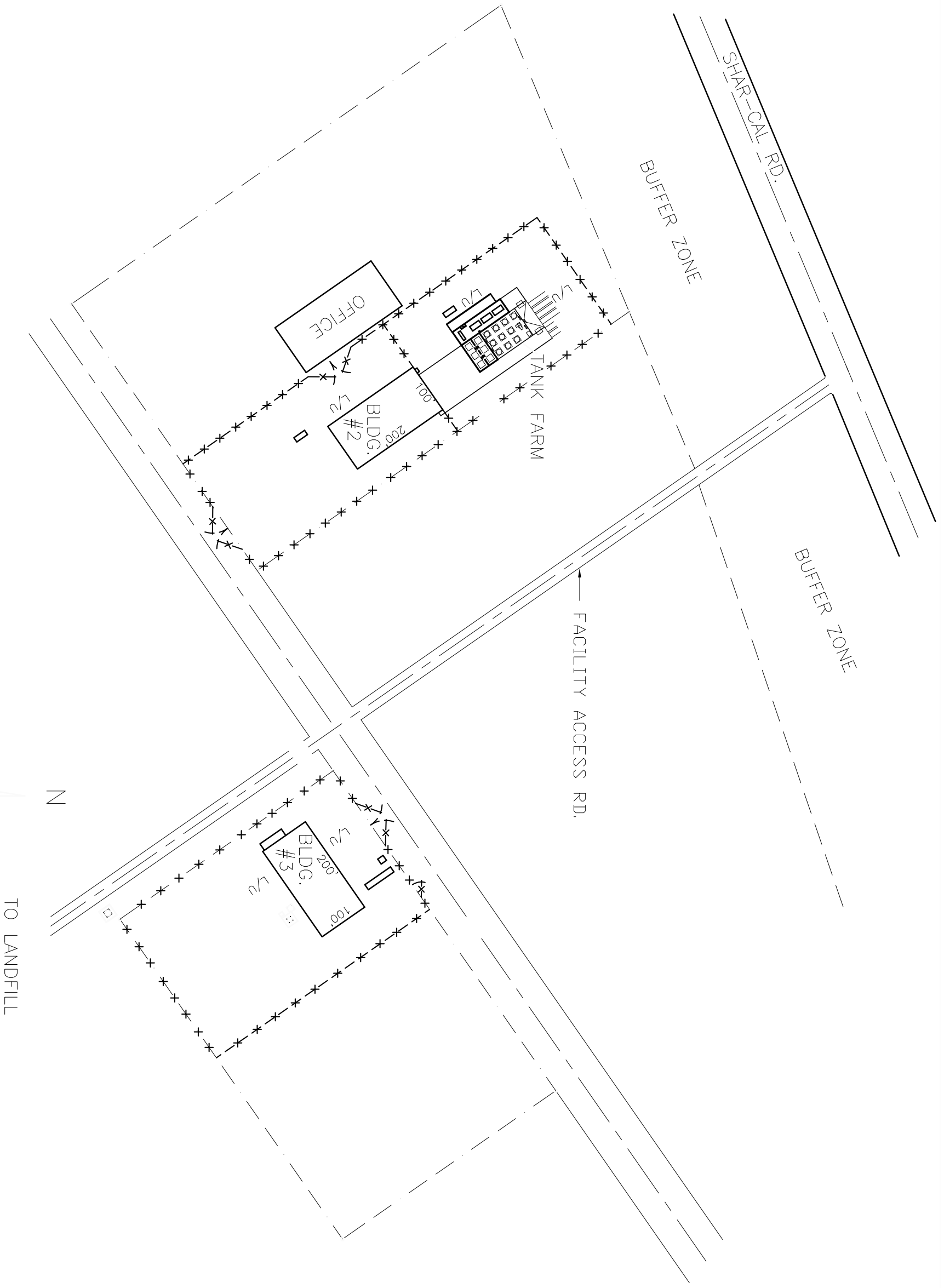
No. Samples are not required for most profiles. On occasion, AES may ask for a sample to determine acceptability, treatability or compatibility.

3. **How many unloading bays do you have?**

Four (4)

4. **Where are the drums staged while you are sampling and qualifying the load?**

All drums and containers are safely and securely staged inside our facility in the staging and sampling area. Once sampled and qualified, AES will then place the containers in their appropriate place in the permitted storage area.



AES ENVIRONMENTAL, LLC. - SITE PLAN

## **AES Kentucky Facility Acceptable Packaging and EPA Codes**

AES can accept all waste codes except those listed below. Material can be received in all DOT approved containers including drums (5 to 55), over-packs, totes, cubic yard boxes, super sacks, consumer packaging, roll offs, dump trailers, tankers, agitated tankers and vacuum trucks.

Prohibited EPA codes: F020, F021, F022, F023, F026, F027 and F028. In addition the following types of waste are also prohibited: TSCA PCB's, medical waste, explosives and radioactive



Gary Morgan – KYDEP 270 898-8495

**C. AIR POLLUTION CONTROL**

**1. Permitted and non-permitted sources of air emissions:**

<u>Source</u>	<u>Permit Number</u>	<u>Issuing Agency</u>
ARE20100001	Aerosol/Paint can crusher	KYDEP
ARE20080002	Containment Building	KYDEP

**2. Future plans that may require new permits or modification to existing permits:**

The processing portion of Building 3 is in the construction phase of being permitted as a RCRA Containment Building.

**3. Where are copies of permits and/or exemptions maintained?**

**At the facility and corporate office.**

**4. Air pollution control incidents that have occurred (emissions in excess of permit or regulatory limitations in the past three years:**

None

**5. Has the facility been audited or inspected by any local, county, state, or federal regulatory agency in the past 12 months for air issues?**

Yes, inspections available upon request.

**6. Has this facility ever received air pollution control violations or administrative orders?**

No

7. **Has this facility received any nuisance (odor, smoke, etc.) complaints from neighboring business or local residences?**

No

8. **Is this facility operating under a consent order or compliance schedule?**

No

9. **Describe the facility's inspection and maintenance schedule regarding Air Pollution/Control:**

The AES Calvert City treatment and storage facility is subject to the requirements of 40 CFR Part 264 RCRA Organic Air Emission Standards. In accordance with 40 CFR 264 Subpart CC the following control device response plan is provided for the activated carbon treatment units. Activated carbon units are used for controlling organic emissions from the

- Can crushing unit
- Aerosol can unit
- Containment building

These control devices are utilized to reduce the total organic content of the vapor stream vented from the miscellaneous treatment units and the containment building. All vapors must flow through the activated carbon units before discharge. The control system is designed for a 95% reduction by weight in organic emissions.

**D. WASTEWATER AND STORM WATER POLLUTION CONTROL**

1. **Describe each of the facility's wastewater and storm water discharges (composition, volume, and source):**

AES does not discharge wastewater/storm water

2. Does this facility discharge to any surface water body, publicly owned treatment works (POTW), or privately owned treatment works?

No

3. Does this facility land apply any wastewater discharges?

No

4. **Has the facility developed a Storm Water Pollution Prevention Plan (SWPPP)?**

Yes, Storm water management:

- a. Undeveloped areas: None required
- b. Manufacturing areas: All processing is performed in an enclosed area with floors curbed and sloped to the interior.
- c. Storage areas: All storage is in fully enclosed buildings with floors curbed and sloped to the interior.
- d. Transfer areas: Transfer areas are sloped and sumped to contain spills

5. **Does the facility make use of an onsite wastewater treatment or pretreatment system?**

No

7. **Has this facility received any notices of violation or administrative orders?**

No

8. **Is this facility operating under a consent order or compliance schedule?**

No

**E. SOLID AND HAZARDOUS WASTE CONTROL**

1. **Describe each of the hazardous and nonhazardous waste streams generated at the facility (composition, volume, and source):**

We are a hazardous waste storage and processing facility taking all RCRA wastes except dioxins, explosives and radioactive wastes. The facility is capable of receiving a large variety of hazardous and non hazardous wastes in drum, totes and bulk. A detailed list of acceptable EPA waste codes is listed in our Part A permit. AES Kentucky is also permitted for stabilization, neutralization and solidification of hazardous wastes. AES conducts treatment in tanks and containers and consolidates compatible wastes.

A Copy of our Part A permit will be given to you during your site visit.

2. **Describe the facility's waste characterization program:**

A copy of our Waste Analysis Plan is available upon request.

3. **Does this facility collect, receive, or dispose of any hazardous or nonhazardous waste streams?**

Yes . We are a hazardous waste storage and processing facility taking all RCRA wastes except dioxins, explosives and radioactive wastes. The facility is capable of receiving a large variety of hazardous and non hazardous wastes in drum, totes and bulk. A detailed list of acceptable EPA waste codes is listed in our Part A permit. AES Kentucky is also permitted for stabilization, neutralization and solidification of hazardous wastes. AES conducts treatment in tanks and containers and consolidates compatible wastes.

4. **Has liquid/solid nonhazardous or hazardous waste ever been disposed of onsite?**

No

5. **What is the facility's Resource Conservation and Recovery Act (RCRA) generator status (i.e., conditionally exempt small quantity generator, small quantity generator, large quantity generator)?**

Large Quantity Generator/TSDF

6. **Onsite accumulation and storage areas for all hazardous and nonhazardous wastes (accepted for disposal or generated):**

Two (2)– 20,000 square foot buildings with concrete containment.

Storage:       4920 - 55 gallon drum equivalents  
                  90,000 gallons of RCRA Tank Storage  
                  36,000 gallons of Non-RCRA Tank Storage  
                  120,000 gallons of Stabilization/Neutralization per day

7. **Has this facility performed a RCRA Facility Assessment (RFA) or a RCRA Facility**

**Investigation (RFI)?**

Yes

**8. Has the facility developed a closure/post-closure plan?**

Yes

- If yes, what form of financial assurance device is being used?
  - Insurance.

**9. Has the facility developed a written RCRA contingency plan?**

Yes

**10. Is this facility operating under a consent order or compliance schedule?**

No

**F. OSHA SAFETY COMPLIANCE**

**1. Selection process and availability of personal protective equipment:**

All personal protective equipment is located in a PPE trailer and readily available to each employee. A hazard assessment has been performed on routine tasks with standard PPE assigned. Each employee is trained on the selection of PPE and the requirement to base PPE on chemical specific hazards.

**2. Personnel monitoring program (medical and industrial hygiene):**

All facility employees are part of an extensive medical monitoring program which includes a new hire exam, annual exam, and change of duty/termination exam. Exams include general health, a metals screen, pulmonary function, EKG, fit test, and drug screen.

**3. Occupational Safety and Health Administration**

**(OSHA) training programs (Hazcom, Hazwoper, etc.):**

Available is a training matrix which describes specific training requirement for facility employees. All employees are 40 hour trained, job/task specific trained and participate in annual refreshers.

**4. Formal Written Safety Programs Include, but not limited to:**

- Accident Investigation
- Medical Monitoring
- Hazard Communication
- HAZWOPER
- Health and Safety Plans
- Personal Protective Equipment
- Respiratory Protection
- Emergency Preparedness
- Fire Protection
- Electrical Hazards
- First Aid
- Fall Protection
- Hearing Conservation
- Bloodborne Pathogens
- Lockout Tagout
- Confined Space
- Forklifts
- Aerial Lifts
- Excavation and Trenching
- Traffic Control
- Hot Work
- Facility Contingency Plan
- Machine/Equipment Guarding and Safety
- Spill Prevention, Control and Countermeasure Plan
- Temperature Extremes
- Welding and Cutting Safety
- Compressed Gas Safety
- RCRA
- DOT/Shipping
- Hazardous Materials Security Plan

# **Facility Compliance Contacts**

## **Primary Contacts:**

### **AES Environmental, LLC**

Allen Kroll  
Director of Health, Safety and Compliance  
2100 Georgetowne Drive, Suite 303  
Sewickley, PA 15143  
(724) 933-4100, ext. 246

## **Kentucky Division of Waste Management**

Mr. Wilson Tan  
Environmental Engineering  
200 Fair Oaks lane, 2<sup>nd</sup> floor  
Frankfort, Kentucky 40601  
(502) 564-6716

Mr. Gary Morgan  
Inspector  
Dept. of Environmental Protection  
Div. of Waste Management  
Paducah Regional Office  
4500 Clarks River Rd.  
Paducah, KY 42003-0823  
(270) 898-8495  
(270) 898-8640 fax

**Kentucky Environmental & Public Protection Cabinet  
Department for Environmental Protection  
Division of Waste Management**

**HAZARDOUS WASTE MANAGEMENT FACILITY PERMIT**

AES Shar-Cal Facility  
American Environmental Services, Inc..  
1689 Shar-Cal Road  
Calvert City, Marshall Co., KY 42029  
EPA ID #KYD-985-073-196  
AI 006083

The Division of Waste Management hereby grants the above-named facility a permit to engage in the activities specified below. This permit has been issued under the provision of KRS Chapter 224 and regulations promulgated pursuant thereto and is subject to all conditions and operating limitations contained herein. Issuance of this permit does not relieve the permittee from the responsibility of obtaining any other permits, licenses, or approvals required by this Cabinet and/or other federal, state, and local agencies.

<b>Part I</b>	<b>-Legal Authority</b>
<b>Part II</b>	<b>-Specific Conditions</b>
<b>Part III</b>	<b>-Standard Conditions</b>
<b>Part IV</b>	<b>-Corrective Action</b>
<b>Part V</b>	<b>-Waste Minimization</b>
<b>Part VI</b>	<b>-Land Disposal Restrictions</b>
<b>Part VII</b>	<b>-RCRA Air Emission Standards</b>
<b>Part VIII</b>	<b>-Referenced Attachments</b>

No deviation from the plans and specifications submitted with your application or the conditions specified herein is allowed, unless authorized in writing from the Division of Waste Management. Violation of the terms and conditions specified herein shall render this permit null and void. All rights of inspection by representatives of the Division of Waste Management are reserved. Conformance with all applicable Waste Management Regulations is the responsibility of the permittee.

<b>PERMIT TYPE:</b>	Operating	<b>PERMIT NUMBER:</b>	KYD 985 073 196 AI006083
---------------------	-----------	-----------------------	-----------------------------

<b>TYPE OF ACTIVITY:</b>	Storage & Treatment Storage in Tanks and Containers Treatment (Stabilization) in Containers Treatment (Bulking) in Tanks	<b>COUNTY:</b>	Marshall
--------------------------	---	----------------	----------

<b>PERMIT FEE:</b>	\$ 55,720	<b>EFFECTIVE DATE:</b>	June 12, 2005
--------------------	-----------	------------------------	---------------

<b>CLOSURE AMOUNT:</b>	\$ 881,698	<b>EXPIRATION DATE:</b>	May 12, 2015
------------------------	------------	-------------------------	--------------

<b>POST-CLOSURE AMOUNT:</b>	N/A
-----------------------------	-----

<b>POST-CLOSURE INSTRUMENT:</b>	Certificate of Insurance
---------------------------------	--------------------------

<b>SUDDEN LIABILITY INSURANCE:</b>	\$ 1 Million each occurrence \$ 2 Million each aggregate
------------------------------------	---

<b>NON-SUDDEN LIABILITY INSURANCE:</b>	N/A
--	-----

**HAZARDOUS WASTE MANAGEMENT UNITS:** Tank Farm I, Buildings 2 and 3, Stabilization

  
\_\_\_\_\_  
Director, Division of Waste Management

Issued this May 12, 2005



KENTUCKY DEPARTMENT FOR ENVIRONMENTAL PROTECTION  
DIVISION OF WASTE MANAGEMENT  
CERTIFICATE OF REGISTRATION  
FOR HAZARDOUS WASTE MANAGEMENT ACTIVITY

**ISSUED TO:**

AES ENVIRONMENTAL, LLC  
ATTN: ALLEN KROLL  
2100 GEORGETOWNE DR STE 303  
SEWICKLEY PA 15143

**LOCATED AT:**

1689 SHAR-CAL ROAD  
CALVERT CITY KY 42029

**TYPE OF CERTIFICATE:** RENEWAL

The Division of Waste Management hereby issues the above-named installation a Certificate of Registration for the hazardous waste activity specified below. This Certificate is issued under the provisions of KRS Chapter 224 and regulations promulgated pursuant thereto. Conformance with all applicable laws and regulations is the responsibility of the registrant. All rights of inspection by representatives of the Division of Waste Management are reserved. Receipt of the registration fee specified below is hereby acknowledged.

This Certificate supersedes all previous Certificates of Registration.

<b>EPA ID NUMBER:</b>	KYD-985-073-196
<b>AI NUMBER:</b>	6083
<b>COUNTY:</b>	MARSHALL
<b>LEGAL STRUCTURE:</b>	P
<b>FEE:</b> \$500	<b>PAID:</b> 3/21/11
<b>ACTIVITY:</b>	LARGE QUANTITY GENERATOR; USED OIL TRANSPORTER; LARGE QUANTITY UNIVERSAL WASTE HANDLER; TREATMENT/STORAGE/DISPOSAL FACILITY; USED OIL TRANSPORTER; HAZARDOUS WASTE TRANSPORTER; HOUSEHOLD COLLECTION
<b>ISSUED:</b>	3/22/11
<b>EFFECTIVE:</b>	3/16/11
<b>EXPIRATION:</b>	MAY 31, 2012

**WASTE STREAM(S):**

THIS CERTIFICATE INCLUDES ALL WASTE STREAMS AS SHOWN ON THE REGISTRATION OF HAZARDOUS WASTE ACTIVITY FORM SIGNED 3/9/11 AND RECEIVED 3/16/11.

April J. Webb, P.E.  
Branch Manager  
Hazardous Waste Branch

Carla Cornett/Edith Greer/Maria Wood  
Environmental Technologists

Questions concerning this Certificate should be directed to Carla Cornett, Edith Greer or Maria Wood at  
(502) 564-6716



# CERTIFICATE OF LIABILITY INSURANCE

OP ID: JB

DATE (MM/DD/YYYY)

06/29/11

THIS CERTIFICATE IS ISSUED AS A MATTER OF INFORMATION ONLY AND CONFERS NO RIGHTS UPON THE CERTIFICATE HOLDER. THIS CERTIFICATE DOES NOT AFFIRMATIVELY OR NEGATIVELY AMEND, EXTEND OR ALTER THE COVERAGE AFFORDED BY THE POLICIES BELOW. THIS CERTIFICATE OF INSURANCE DOES NOT CONSTITUTE A CONTRACT BETWEEN THE ISSUING INSURER(S), AUTHORIZED REPRESENTATIVE OR PRODUCER, AND THE CERTIFICATE HOLDER.

**IMPORTANT:** If the certificate holder is an ADDITIONAL INSURED, the policy(ies) must be endorsed. If SUBROGATION IS WAIVED, subject to the terms and conditions of the policy, certain policies may require an endorsement. A statement on this certificate does not confer rights to the certificate holder in lieu of such endorsement(s).

<b>PRODUCER</b> <b>SeibertKeck Insurance Agency</b> 2950 W. Market Street Akron, OH 44333-3600 Craig A. Hassinger		330-867-3140 330-865-6826	<b>CONTACT NAME:</b> Julie Beck <b>PHONE (A/C, No, Ext):</b> 330-294-1348 <b>E-MAIL ADDRESS:</b> jbeck@seibertkeck.com <b>PRODUCER CUSTOMER ID #:</b> AMERI-2	<b>FAX (A/C, No):</b> 330-865-6826
<b>INSURED</b> <b>American Environmental Services, Inc.</b> <b>AES Environmental, LLC</b> 2100 Georgetowne Drive Sewickley, PA 15143-8780		<b>INSURER(S) AFFORDING COVERAGE</b>		<b>NAIC #</b>
		<b>INSURER A :</b> Greenwich Insurance Co.		
		<b>INSURER B :</b> XL Specialty Insurance Company		
		<b>INSURER C :</b>		
		<b>INSURER D :</b>		
		<b>INSURER E :</b>		
		<b>INSURER F :</b>		

**COVERAGES****CERTIFICATE NUMBER:****REVISION NUMBER:**


THIS IS TO CERTIFY THAT THE POLICIES OF INSURANCE LISTED BELOW HAVE BEEN ISSUED TO THE INSURED NAMED ABOVE FOR THE POLICY PERIOD INDICATED. NOTWITHSTANDING ANY REQUIREMENT, TERM OR CONDITION OF ANY CONTRACT OR OTHER DOCUMENT WITH RESPECT TO WHICH THIS CERTIFICATE MAY BE ISSUED OR MAY PERTAIN, THE INSURANCE AFFORDED BY THE POLICIES DESCRIBED HEREIN IS SUBJECT TO ALL THE TERMS, EXCLUSIONS AND CONDITIONS OF SUCH POLICIES. LIMITS SHOWN MAY HAVE BEEN REDUCED BY PAID CLAIMS.

INSR LTR	TYPE OF INSURANCE	ADDL INSR	SUBR WVD	POLICY NUMBER	POLICY EFF (MM/DD/YYYY)	POLICY EXP (MM/DD/YYYY)	LIMITS	
A	<b>GENERAL LIABILITY</b>			GEC000172611	04/08/11	04/08/12	EACH OCCURRENCE	\$ 1,000,000
	<input checked="" type="checkbox"/> COMMERCIAL GENERAL LIABILITY						DAMAGE TO RENTED PREMISES (Ea occurrence)	\$ 100,000
	<input type="checkbox"/> CLAIMS-MADE <input checked="" type="checkbox"/> OCCUR						MED EXP (Any one person)	\$ 5,000
							PERSONAL & ADV INJURY	\$ 1,000,000
							GENERAL AGGREGATE	\$ 2,000,000
							PRODUCTS - COMP/OP AGG	\$ 2,000,000
							<b>Emp Ben.</b>	\$ 1,000,000
B	<b>AUTOMOBILE LIABILITY</b>			AEC000172711 INCLUDES AUTO POLLUTI END TO POLICY LIABILITY LIMIT	04/08/11	04/08/12	COMBINED SINGLE LIMIT (Ea accident)	\$ 1,000,000
	<input checked="" type="checkbox"/> ANY AUTO						BODILY INJURY (Per person)	\$
	<input type="checkbox"/> ALL OWNED AUTOS						BODILY INJURY (Per accident)	\$
	<input type="checkbox"/> SCHEDULED AUTOS						PROPERTY DAMAGE (Per accident)	\$
	<input checked="" type="checkbox"/> HIRED AUTOS							\$
	<input checked="" type="checkbox"/> NON-OWNED AUTOS							\$
	<b>MCS-90</b>						\$	
A	<b>UMBRELLA LIAB</b>	<input checked="" type="checkbox"/>	OCCUR	UEC000885510	04/08/11	04/08/12	EACH OCCURRENCE	\$ 10,000,000
	<b>EXCESS LIAB</b>	<input type="checkbox"/>	CLAIMS-MADE				AGGREGATE	\$ 10,000,000
	DEDUCTIBLE						<b>PR/Co Agg</b>	\$ 10,000,000
	<input checked="" type="checkbox"/> RETENTION \$ 10,000						<b>Gen Agg</b>	\$ 10,000,000
B	<b>WORKERS COMPENSATION AND EMPLOYERS' LIABILITY</b>			WEC000603711	04/08/11	04/08/12	<input checked="" type="checkbox"/> WC STATUTORY LIMITS	OTHER
	ANY PROPRIETOR/PARTNER/EXECUTIVE OFFICER/MEMBER EXCLUDED? (Mandatory in NH)	<input type="checkbox"/>	Y / N				E.L. EACH ACCIDENT	\$ 500,000
	If yes, describe under DESCRIPTION OF OPERATIONS below		N / A				E.L. DISEASE - EA EMPLOYEE	\$ 500,000
A	<b>Consultant's Environmental Liab</b>			PEC000172811	04/08/11	04/08/12	Ea. Claim	1,000,000
							Aggregate	1,000,000

DESCRIPTION OF OPERATIONS / LOCATIONS / VEHICLES (Attach ACORD 101, Additional Remarks Schedule, if more space is required)

Umbrella/Excess Policy is Claims-Made over Claims Made underlying policies and Occurrence over Occurrence underlying policies. Insurance Coverage includes Evanston Insurance Company Policy #07EIL00160 - term 6/20/11 - 6/20/12 with Closure Limit of \$980,000.

**CERTIFICATE HOLDER****CANCELLATION**

KYDEP-1  KY Dept. of Environmental Protection, Div of Waste Mgmt 14 Riley Road Frankfort, KY 40601	SHOULD ANY OF THE ABOVE DESCRIBED POLICIES BE CANCELLED BEFORE THE EXPIRATION DATE THEREOF, NOTICE WILL BE DELIVERED IN ACCORDANCE WITH THE POLICY PROVISIONS.  AUTHORIZED REPRESENTATIVE 
--	---

© 1988-2009 ACORD CORPORATION. All rights reserved.

# NOTEPAD

INSURED'S NAME **American Environmental**

**AMERI-2**  
**OP ID: JB**

PAGE 2  
DATE **06/29/11**

**LEASED/RENTED EQUIPMENT:** Policy Number CWP1586963, Westfield Insurance Company, 4/8/11 to 4/8/12 term. Limit is \$135,000 subject to \$1,000 deductible.

**HIRED CAR PHYSICAL DAMAGE:** Policy Number AEC000172711, XL Specialty Insurance Company, 4/8/11 to 4/8/12 term. Comprehensive Deductible is \$1,000 and Collision Deductible is \$1,000.

**SCHEDULED AUTO PHYSICAL DAMAGE:**  
Comprehensive Deductible: \$3,000 Extra Heavy, \$2,000 Heavy, \$1,000 all other vehicles. Collision Deductible: \$3,000 Extra Heavy, \$2,000 Heavy, \$1,000 all other vehicles